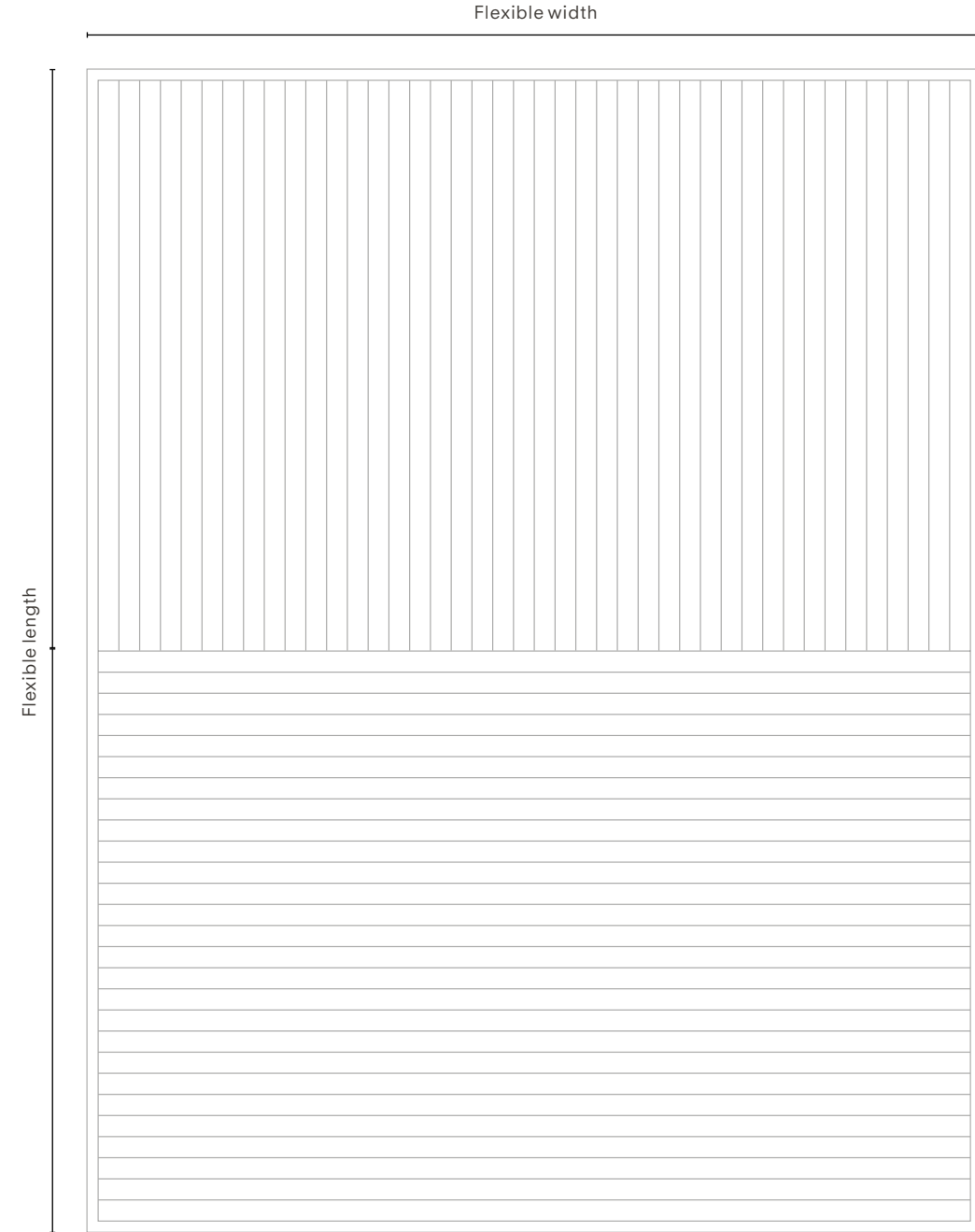
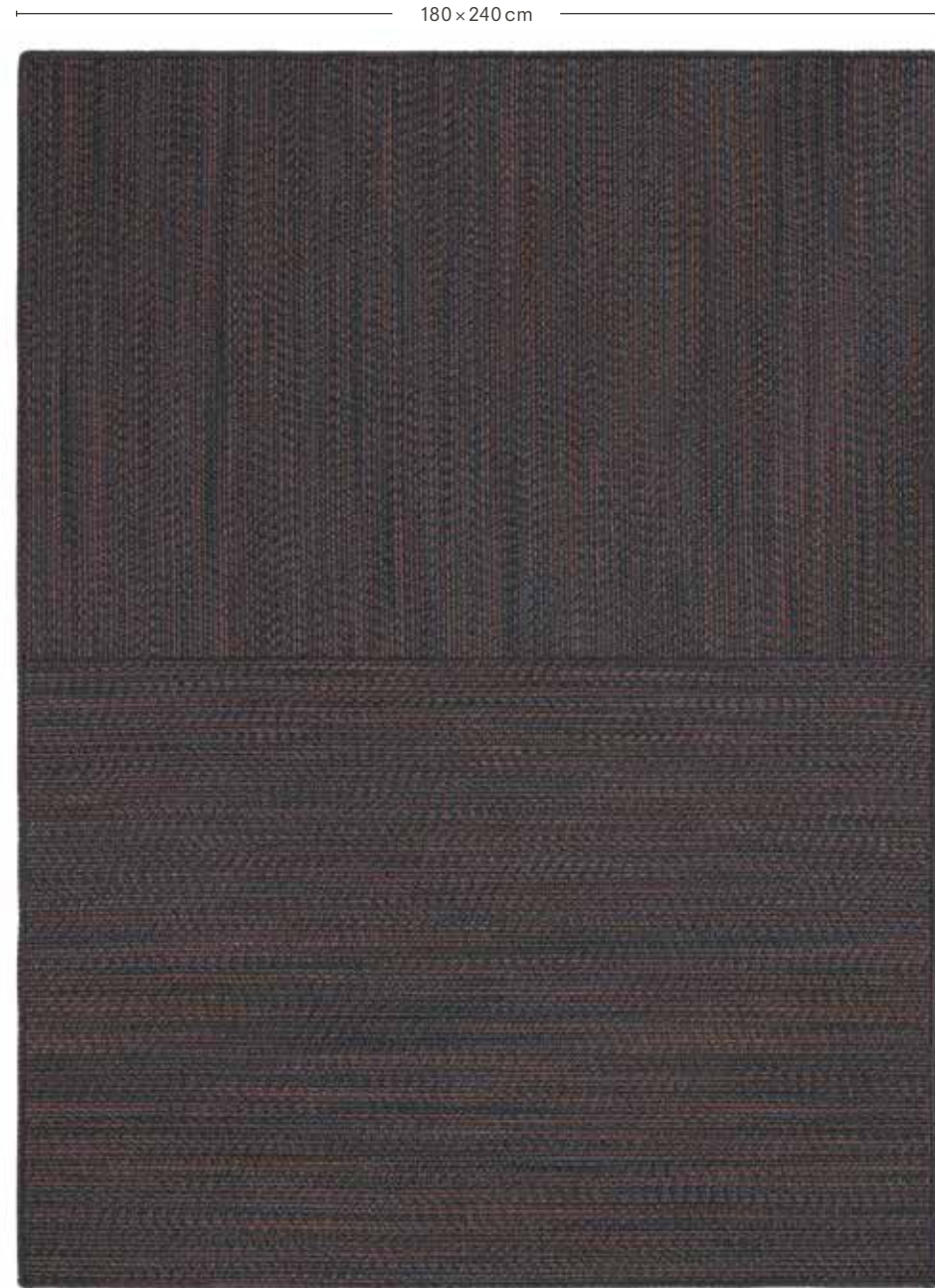


Corde Droit 0361



Corde Droit Corde Chevron

Design Ronan Bouroullec
Production method Stitching
Material 95% pure New Zealand wool, 5% cotton
Height 9 mm (½")
Weight 2600 g/m² (8.5 oz/sq ft)
Maximum size 300 cm × 400 cm (118" × 157 ½")
Size variation +/- 3%
Traffic Suitable for heavy residential use and the use of corridors and castors with exceptions of stairways. Suitable for medium commercial use with exceptions of stairways, corridors or with the use of castors
Flammability EN 13501-1 Bfl-s1, ASTM D 2859/CPSC FF 1-70/FF 2-70, 16 CFR 1630
Care Professional cleaning
Country of origin India

Notes
Slight colour differences may occur
Irregularities may occur as a result of the hand crafted process
Corde Chevron pattern will be adjusted according to rug dimension, visualisation available
Corde Droit pattern is scaled up for each rug dimension, visualisation available
Round or odd shape not possible
Rug underlay recommended

For more information, please visit: kvadrat.dk

kvadrat

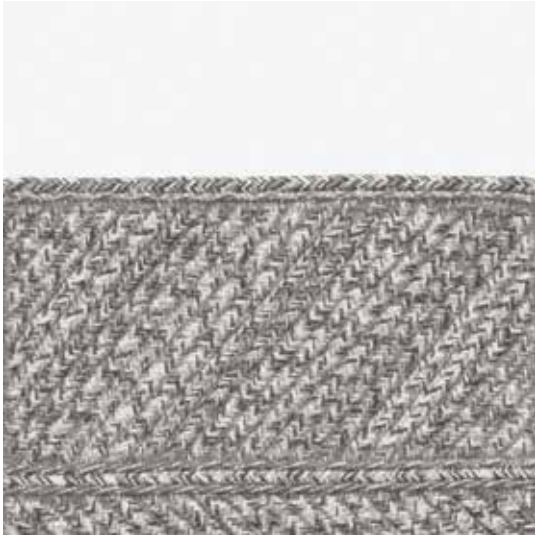
2023-201450005

Corde Droit Corde Chevron





Corde Chevron 0112
colour corresponds with Corde Droit 0111



Corde Chevron 0152
colour corresponds with Corde Droit 0151



Corde Chevron 0492
colour corresponds with Corde Droit 0491



Corde Chevron 0192
colour corresponds with Corde Droit 0191



Corde Chevron 0362
colour corresponds with Corde Droit 0361

